

# MONTHLY MEMBERSHIP PROGRESS REPORT

LOCATION INDIA

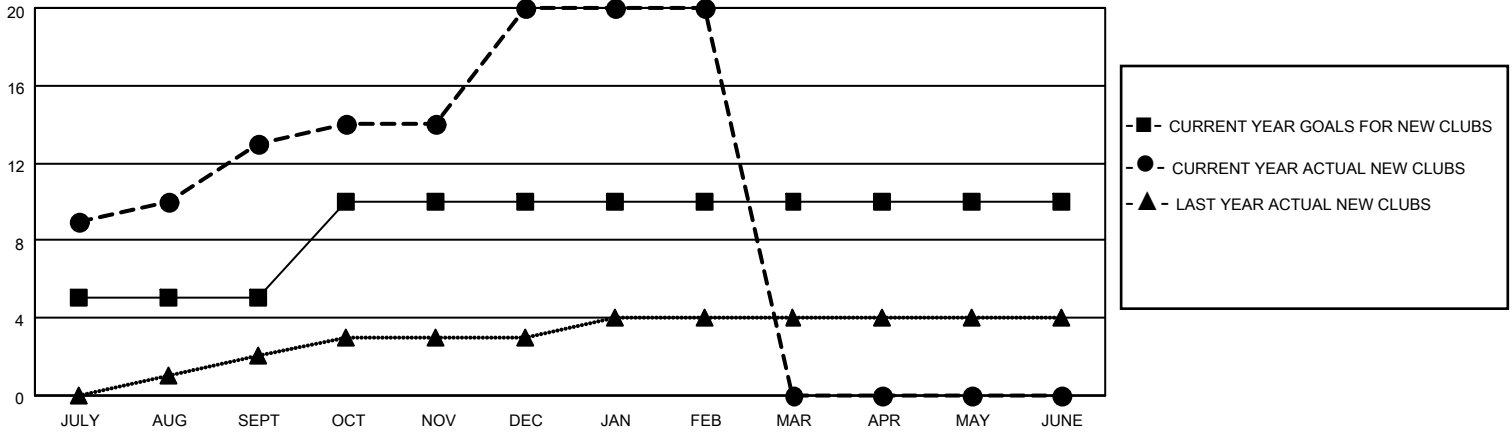
District 321 D

Results as of: 2/28/2021

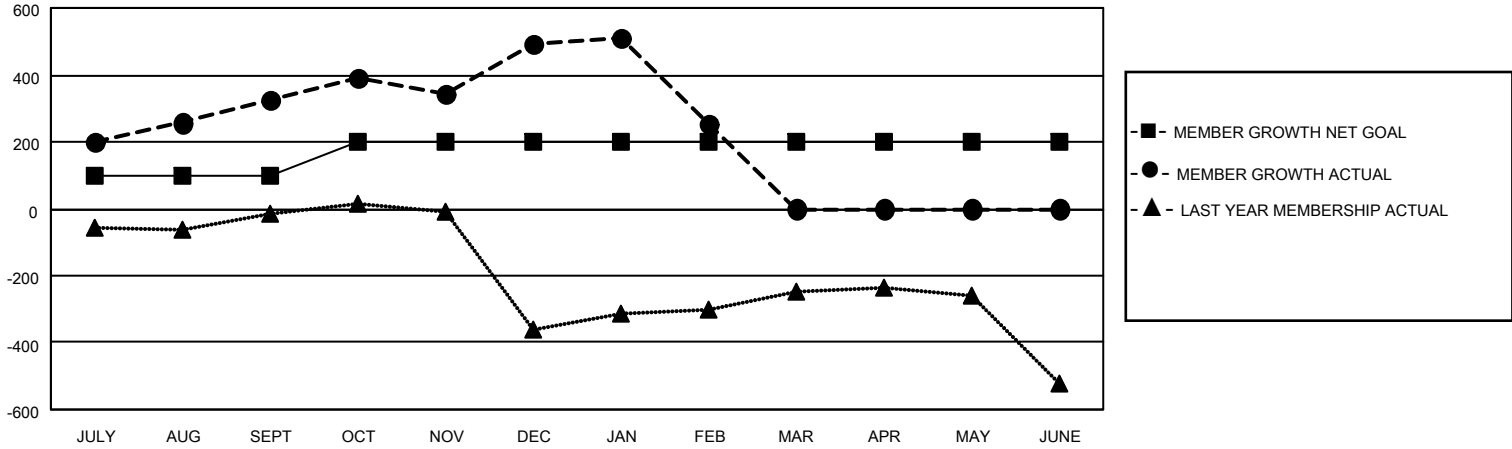
Clubs			
RESULTS FOR 2020-2021			
QUARTER	NEW CLUB GOAL	NEW CLUBS	DROPPED CLUBS
JULY/AUG/SEPT	5	13	0
OCT/NOV/DEC	5	7	0
JAN/FEB/MAR	0	0	12
APR/MAY/JUNE	0	0	0

Members			
RESULTS FOR 2020-2021			
QUARTER	MEMBER GROWTH NET GOAL	MEMBER GROWTH ACTUAL	DROPPED MEMBERS ACTUAL (including transfers)
JULY/AUG/SEPT	100	451	108
OCT/NOV/DEC	100	418	242
JAN/FEB/MAR	0	57	283
APR/MAY/JUNE	0	0	0

**GOALS AND ACTUAL NEW CLUBS CUMULATIVE**



**GOALS AND ACTUAL MEMBERS CUMULATIVE**



**DROPPED CLUBS: 12**

**74 CLUBS OF 146 ADDED 1 OR MORE NEW MEMBERS**

**GENDER DISTRIBUTION**

MALE            3,002 (72.93%)  
 FEMALE        1,114 (27.07%)

**DROPPED MEMBERS**

[CLICK HERE FOR CUMULATIVE MEMBERSHIP DATA](#)

DECEASED	16
CLUB CANCELLED	258
OTHER	359
<b>TOTAL</b>	<b>633</b>

TOTAL FAMILY UNIT MEMBERS	2,237
FAMILY MEMBERS PAYING HALF DUES	1,311